



Meals on Wheels Hospice & Palliative Care

Cloth Mask Instructions and Photos

Thank you for volunteering to make cloth masks for VNA. We are so appreciative of your time and talent.

Please deliver completed masks to:

VNA/ Meals on Wheels Kitchen

1440 W Mockingbird Lane

Dallas, TX 75247

(214) 689-2639

9-11am in box outside door on Tuesdays and Thursdays

For any questions regarding these instructions, please contact:

Nancy Crowley, Hospice Volunteer at 520-271-6287

Laura Kaiser, Hospice Volunteer Manager at 972-533-4639 or kaiserl@vnatexas.org

Please note: These masks will be used in line with CDC recommended uses. These are not a substitute for current procedures for masks or N95 masks.

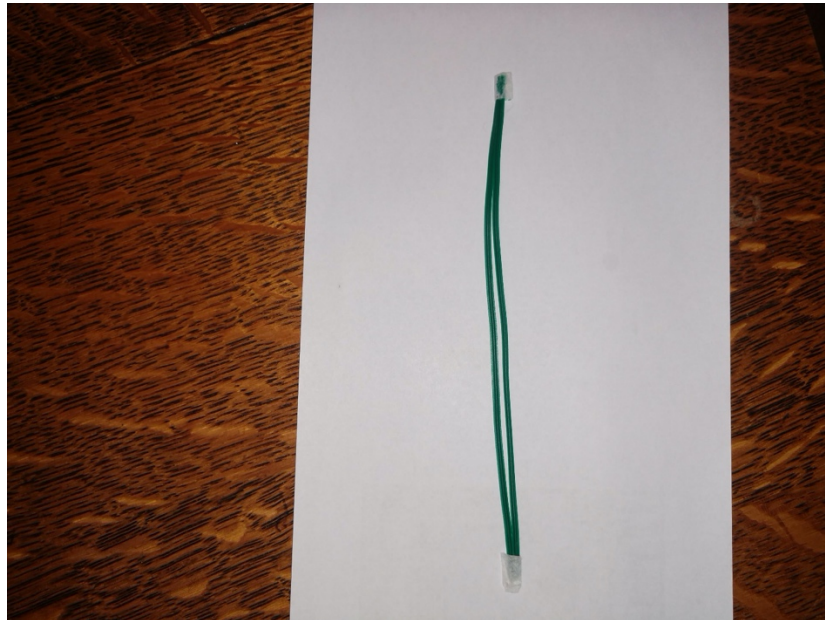
Materials Needed:

1. 100 % woven cotton fabric (not flannel) in muslin or quilting fabric weight
2. 1/4" elastic or piping cord, ribbon, etc. if elastic is unavailable
3. thread
4. scraps of iron-on interfacing (to enclose ends of nose wires cut from materials below)
5. spool of 100 ft Vigoro Plant Tie w/Cutter
*this product is pictured at the end of these instructions

Approximately 3/8" seams were used in sewing

Instructions:

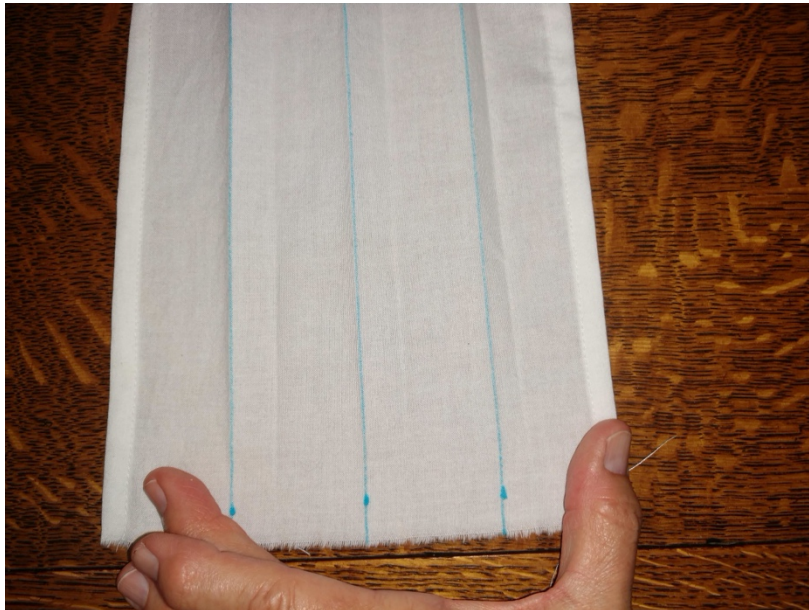
1. For each mask, cut (1) 8" square of cotton and (2) 1 1/2" x 4 1/2" strips of cotton.
2. Cut 2 pieces of Vigoro wire 6" long. Straighten them and lay side by side on ironing surface. Cut a scrap of iron-on interfacing just big enough to enclose the ends of the two wires (to help prevent them from poking through the fabric and into skin) set aside for now.



3. From 1/4" elastic, cut (2) 9" pieces and set aside for now.
4. Working with 8" square of fabric, turn under the top and bottom edges approximately 1/4" twice to form finished hems on both edges.



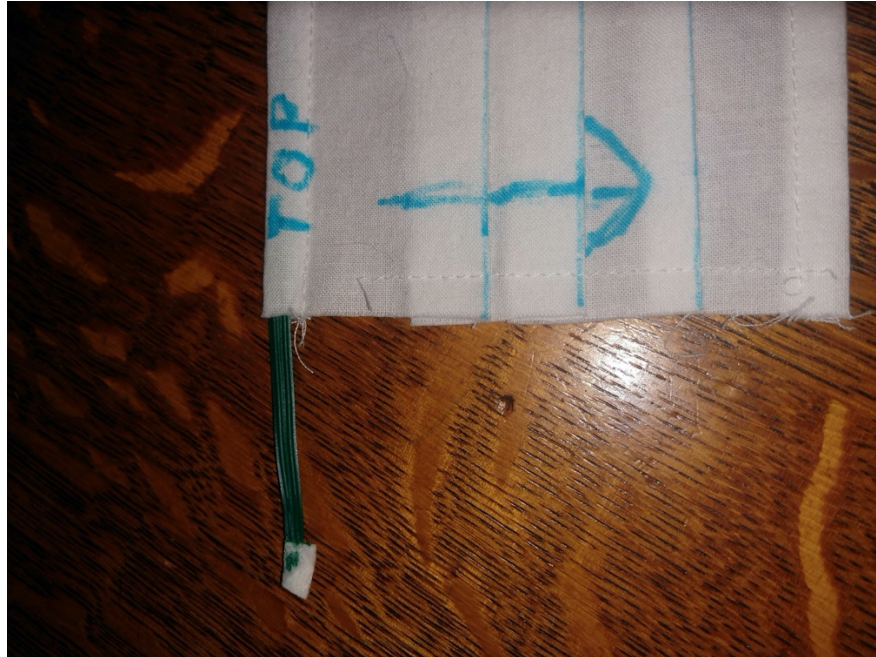
5. Measuring from finished bottom edge, measure and mark folds for pleats at the following distances: $1\frac{1}{2}$ ", $3\frac{1}{4}$ " and 5". Fold and steam press very well.



6. Form tucks by folding these lines down. Your finished tucks when flat should reduce the height of the mask from approximately $3\frac{3}{4}$ " tall. Size your tucks to achieve that measurement.

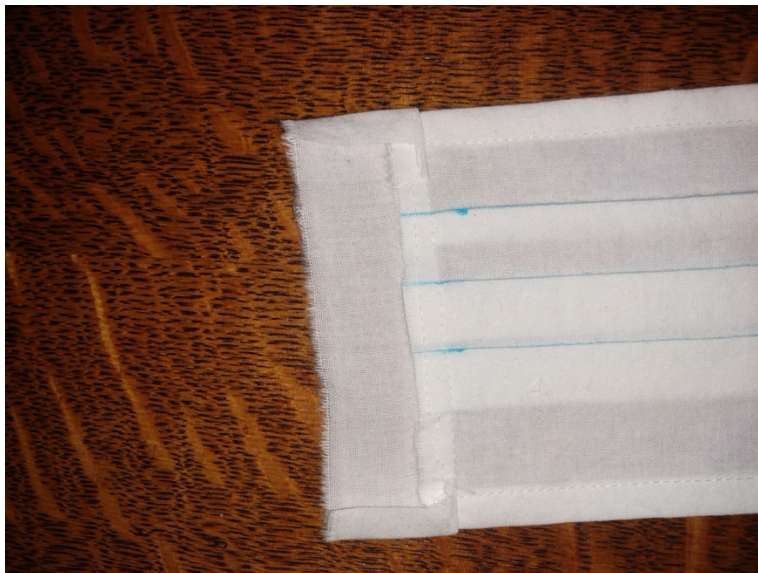
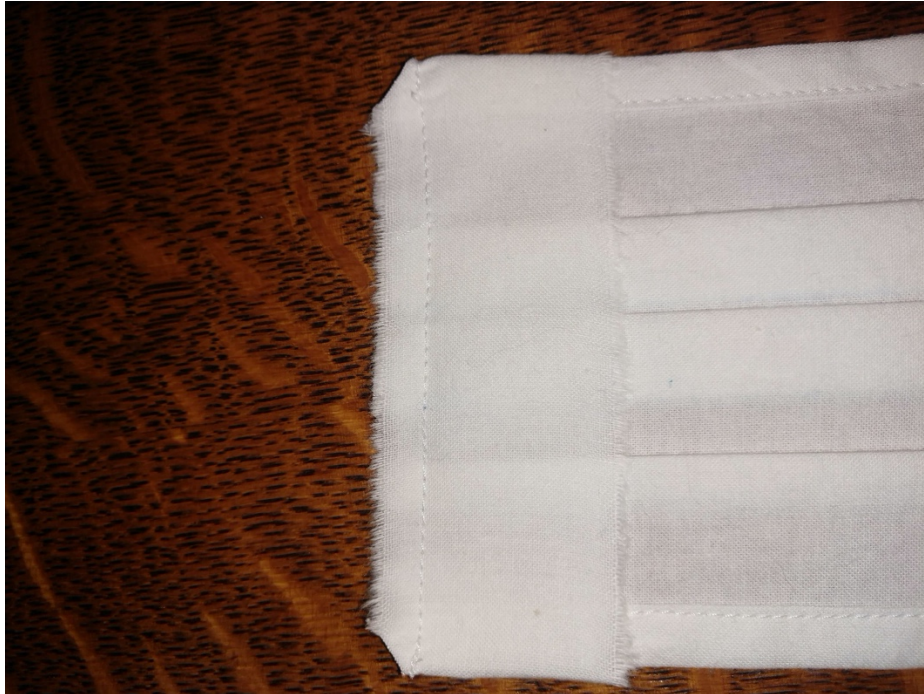


7. Stich only over ends of tucks to hold them in place.
8. Insert prepared wire strands in the casing formed when you hemmed the top of your mask. Center the wire.

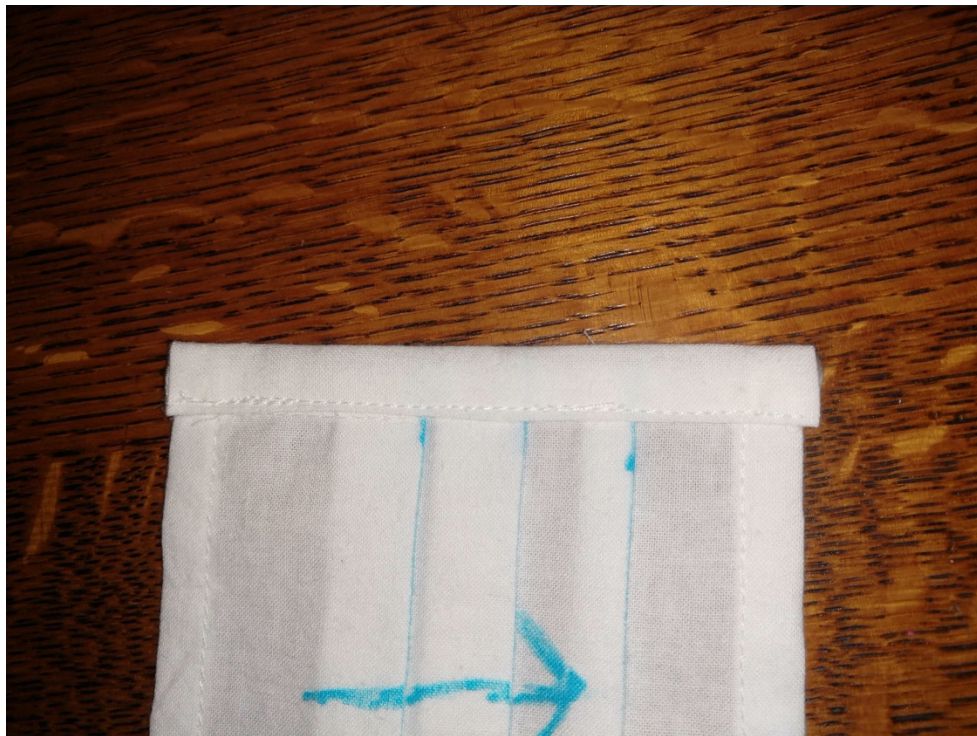
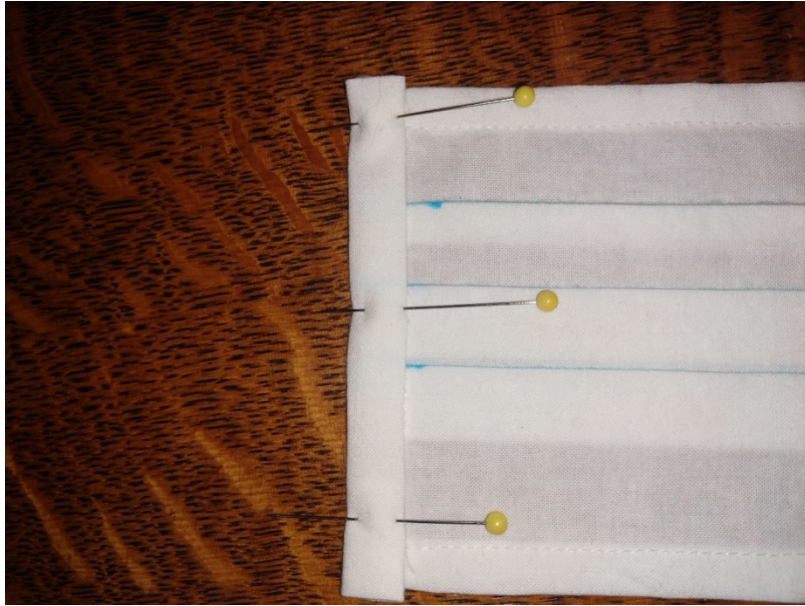


9. Take one of your 4 1/2" strips of fabric and place it RIGHT side of strip to WRONG side of one of the mask sides folding the excess around to the front of the mask. Stitch. Trim corners and turn away from mask.

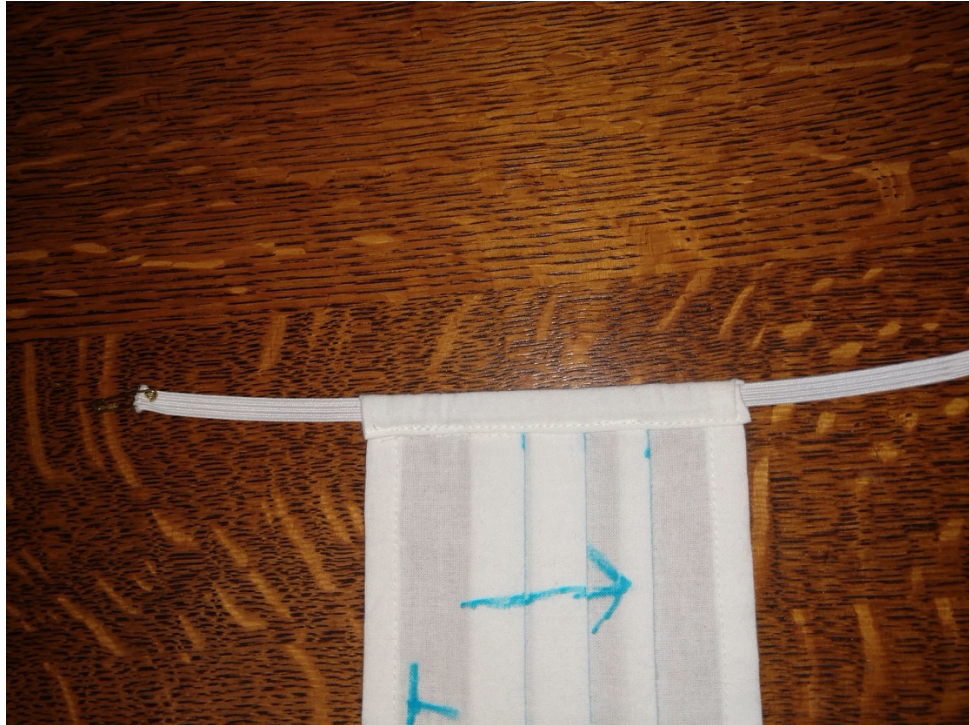




10. Press under raw edge of strip 1/4" toward wrong side of strip, bring folded edge over and pin just beyond stitching line formed when you attached strip. Topstitch in place. Repeat with other side.



11. Your enclosure for the sides has also created a casing for your elastic (or cording/ribbon, etc. if necessary). Insert your 9" piece of elastic, overlap ends approximately 1/2" and stitch back and forth several times to secure. Adjust elastic so that join is hidden in casing.



Congratulations!!! You are now finished with MASK NUMBER ONE!! . Pat yourself on the back and get ready for another round!!



Available at Home Depot or possibly Lowe's or other garden supply stores.